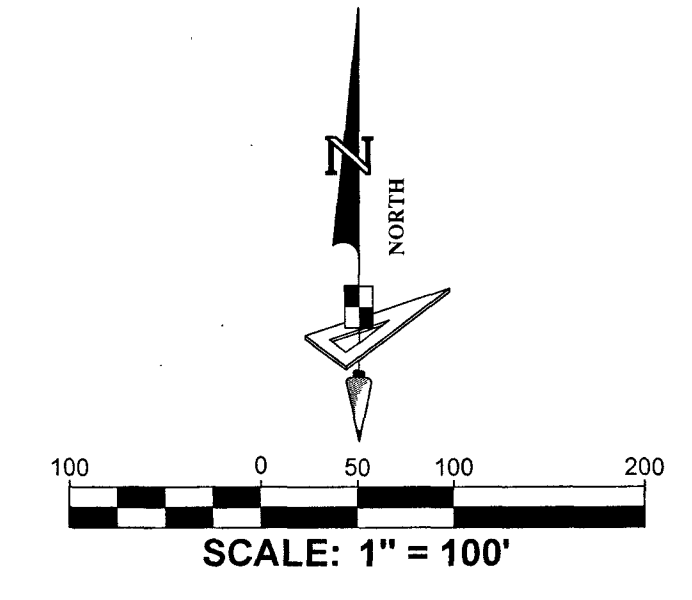
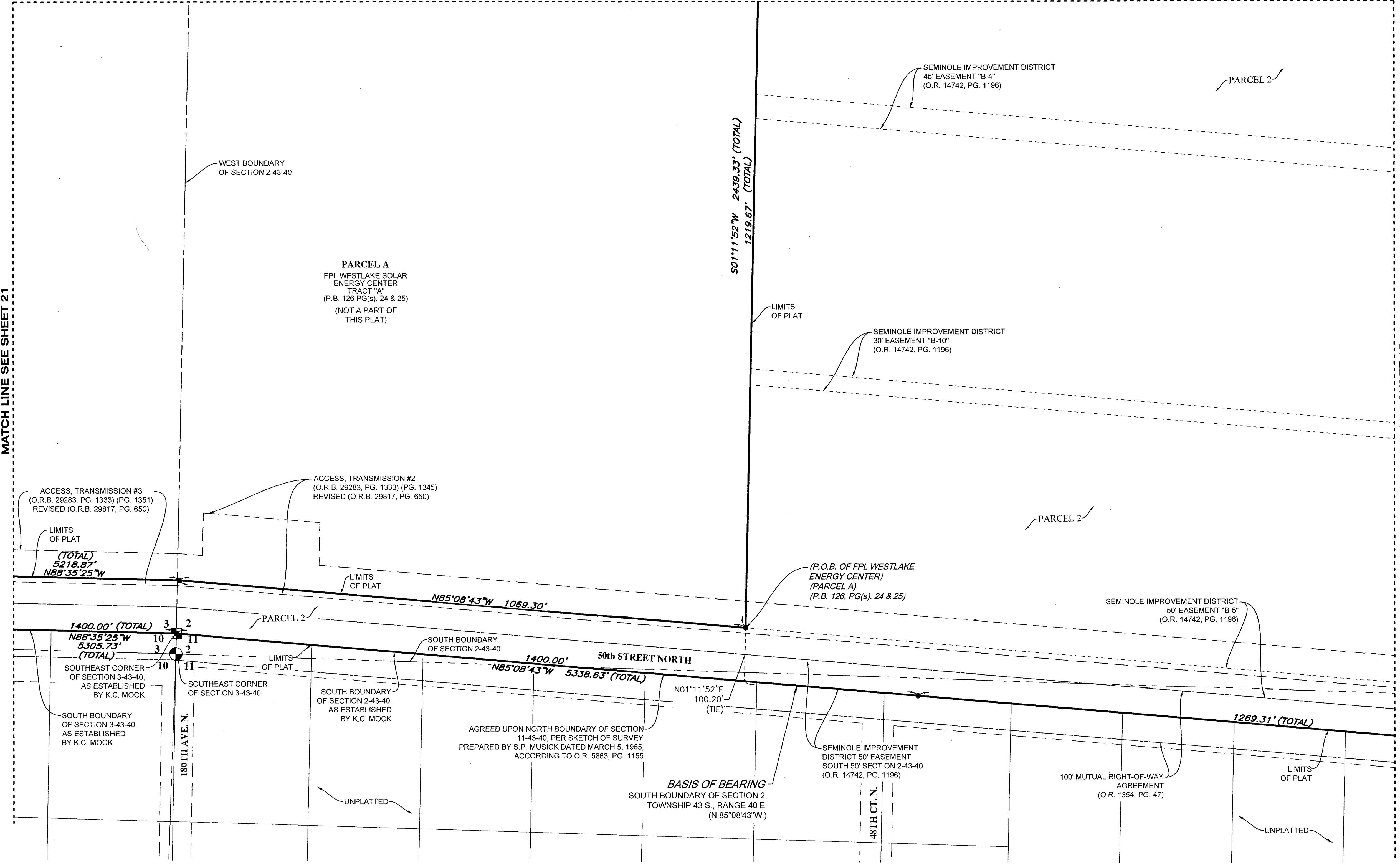


66

# WESTLAKE WEST

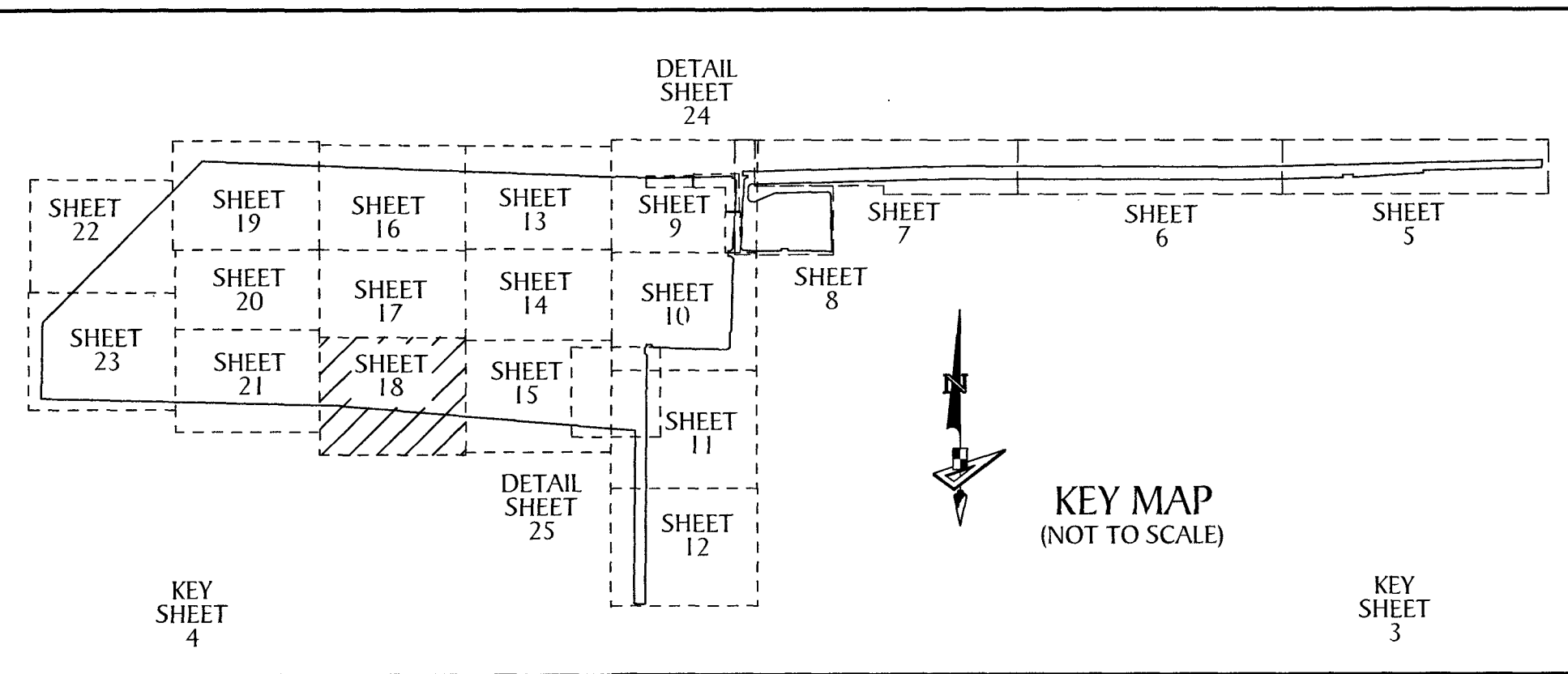
A SUBDIVISION IN SECTIONS 1, 2, 3 AND 12, TOWNSHIP 43 SOUTH, RANGE 40 EAST, AND SECTIONS 5 AND 6, TOWNSHIP 43 SOUTH, RANGE 41 EAST, CITY OF WESTLAKE, PALM BEACH COUNTY, FLORIDA, BEING, IN PART, A REPLAT OF THE FOLLOWING: A PORTION OF TRACT O.S.T. #1 AND ALL OF TRACT O.S.T. #2, "PERSIMMON BOULEVARD WEST - PLAT 2", PLAT BOOK 134, PAGES 164 THROUGH 166, INCLUSIVE, AND, A PORTION OF TOWN CENTER PARKWAY, "FPL WESTLAKE SOLAR ENERGY CENTER", PLAT BOOK 126, PAGES 24 AND 25, PUBLIC RECORDS OF PALM BEACH COUNTY, FLORIDA.

MATCH LINE SEE SHEET 17



MATCH LINE SEE SHEET 21

MATCH LINE SEE SHEET 15



LEGEND			
P.O.B. ----	POINT OF BEGINNING	FPL/FP & L ----	FLORIDA POWER AND LIGHT
P.O.C. ----	POINT OF COMMENCEMENT	R/W ----	RIGHT-OF-WAY
P.B. ----	PLAT BOOK	(R) ----	RADIAL
D.B. ----	DEED BOOK	(NR) ----	NON-RADIAL
R.P.B. ----	ROAD PLAT BOOK	HOA ----	HOMEOWNERS ASSOCIATION
O.R./O.R.B. ----	OFFICIAL RECORDS BOOK	S.I.D. ----	SEMINOLE IMPROVEMENT DISTRICT
PG./PG(S) ----	PAGE(S)	PRM ----	PERMANENT REFERENCE MONUMENT
NAD ----	NORTH AMERICAN DATUM	● ----	PERMANENT CONTROL POINT
W.M.T. ----	WATER MANAGEMENT TRACT	□ ----	FOUND PERMANENT REFERENCE MONUMENT
O.S.T. ----	OPEN SPACE TRACT	○ ----	SET 1/2" IRON ROD WITH PRM CAP STAMPED "PRM LB 7768"
P.B.C. ----	PALM BEACH COUNTY		
U.E. ----	UTILITY EASEMENT		
D.E. ----	DRAINAGE EASEMENT		
L.M.A.E. ----	LAKE MAINTENANCE ACCESS EASEMENT		
5-43-41	SECTION-TOWNSHIP-RANGE		
AC ±	ACRES PLUS OR MINUS		
R	RADIUS		
L	ARC LENGTH		
D	DELTA ANGLE		
CB	CHORD BEARING		
C	CHORD		
N.T.I.	NON-TANGENT INTERSECTION		
N.T.C.	NON-TANGENT CURVATURE		
P.C.	POINT OF CURVATURE		
P.T.	POINT OF TANGENCY		
P.C.C.	POINT OF COMPOUND CURVATURE		
P.R.C.	POINT OF REVERSE CURVATURE		
R.I.	RADIAL INTERSECTION		



4152 W. Blue Heron Blvd.  
Suite 106  
Riviera Beach, FL 33404  
Phone: (561) 444-2720  
www.geopointsurvey.com  
Licensed Business Number LB 7768